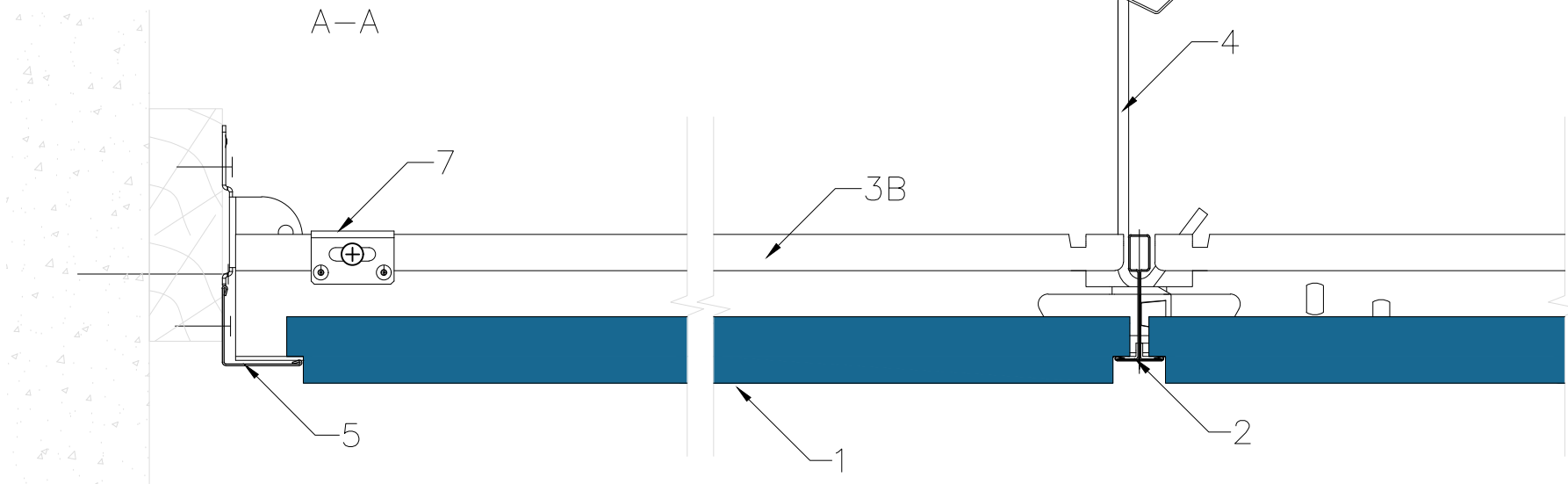



1. Tile ROCKFON, edge E15
2. Mainrunner T15 C/H38 3600 white
- 3B. Cross Tee T15 C38 1200 white
4. Adjustable hanger
5. Wall Angle 24/24 3050 white
7. Wall and bridging bracket



All screws and other fastenings shown are indicative and illustrative only.  
Specific fasteners should be chosen dependent on substrates and materials being used.

<b>Information:</b> Rockfon system A/E T15 Perimeter detail Wall angle on wooden lath – E15S8 (20 mm)	<b>Date:</b> 12-07-2022	<b>Drawing Type:</b> TECHNICAL		
	<b>Drawing No.:</b> SCA-01-T15-AE-14.3	<b>Drawn by:</b> OPTS	<b>Scale:</b> 1:2	
	<b>Contact information:</b> info@rockfon.dk	<b>Revision No.:</b> 1		

We kindly draw your attention to the fact that the above drawings should be considered as guidelines and therefore are without responsibility on the part of Rockfon.